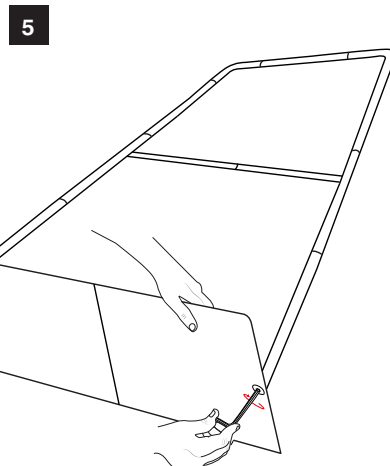
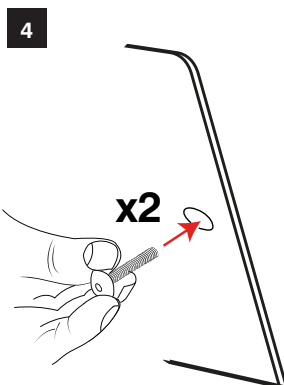
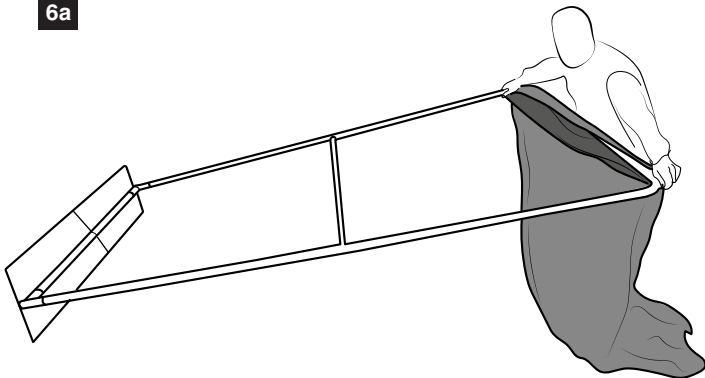


NOTE: FOR ZIPPED VERSION REFER TO STEP 6B - THEN CONTINUE TO ATTACH BASE AS PER STEPS 4 & 5



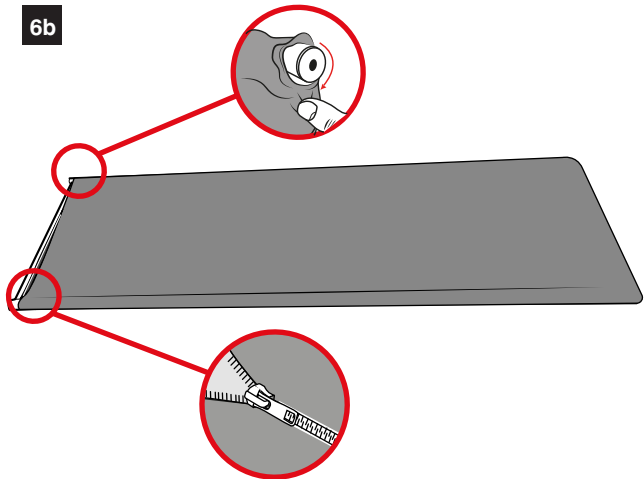


6a

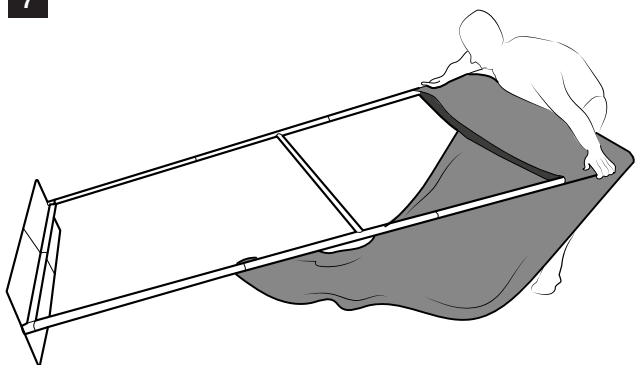


NOTE: FOR ZIPPED VERSION, GRAPHIC MUST BE ATTACHED BEFORE ATTACHING BASE

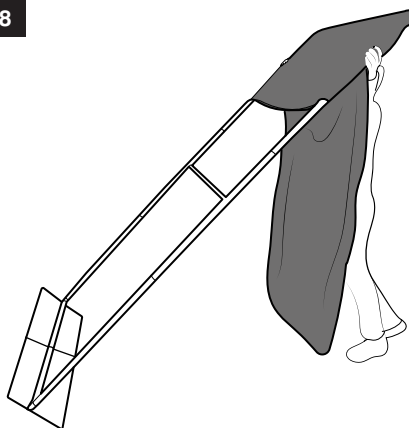
6b



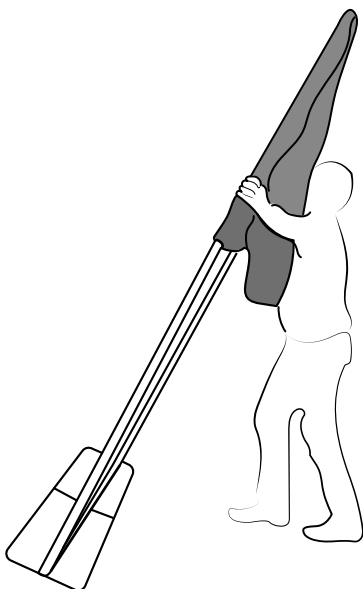
7



8



9



10

